



GILMORE & ASSOCIATES, INC.

FULL SERVICE CIVIL ENGINEERING & CONSULTING



## PINE RUN COMMUNITY Doylestown Borough, PA

G&A conducted a site characterization pertaining to closure and remediation of one (1) 5,000-gallon diesel fuel UST. The Site characterization included review of existing files, soil sampling, site survey, installation of three (3) monitoring wells, four (4) quarters of groundwater sampling, geophysical survey of utility lines, fate and transport evaluation, ecological screening, and reporting. The site characterization was conducted in order to ascertain whether the release of diesel fuel may pose a threat to site users, nearby residents, or the environment. Based on the sampling results, observations made during the site investigation, and fate and transport evaluation, G&A concluded that remedial activities were successful. G&A oversaw the abandonment of onsite monitoring wells. The PADEP issued a release of liability under Act 2 for the remediation that was performed. The project was coordinated with the Underground Storage Tank Indemnification Fund, who reimbursed the owner for the full expense of the remediation.



### Services Provided by G&A

- UST Site Characterization and Remediation through PA Act 2



Client Information  
Robert Fretz, Facilities Management  
777 Ferry Avenue  
Doylestown, PA 18901  
Phone: (215) 340-5138

Contact Information  
Toby J. Kessler, PG  
65 E. Butler Avenue, Suite 100  
New Britain, PA 18901-5106  
Phone: 215-345-4330

GILMORE-ASSOC.COM



GILMORE & ASSOCIATES, INC.

FULL SERVICE CIVIL ENGINEERING & CONSULTING



## HABITAT FOR HUMANITY OF BUCKS COUNTY Perkasie Borough, PA

Habitat for Humanity of Bucks County intends to redevelop a former manufacturing facility into low-income housing. Gilmore & Associates, Inc. completed an Environmental Review Record in accordance with the National Environmental Policy Act (NEPA) and requirements of the United States Department of Housing & Urban Development. The Environmental Review Record required completion of an Environmental Assessment, which included a Phase I Environmental Site Assessment (ESA); a Limited Asbestos Screen (LAS); a Phase II ESA involving soil and indoor air sampling; noise assessment; inquiries to local, state and federal agencies; evaluation of historical properties; floodplains and wetlands protection; and endangered species.

### Services Provided by G&A

- Phase I & II Environmental Site Assessment
- Asbestos Inspection
- Environmental Review Record for HUD
- Site/Civil Engineering
- Professional Survey



Client Information  
Mike Fallon  
31 Oak Avenue, Suite 100  
Chalfont, PA 18914  
Phone: (215) 822-2812

Contact Information  
Toby J. Kessler, PG  
65 E. Butler Avenue, Suite 100  
New Britain, PA 18901-5106  
Phone: 215-345-4330

[GILMORE-ASSOC.COM](http://GILMORE-ASSOC.COM)



GILMORE & ASSOCIATES, INC.

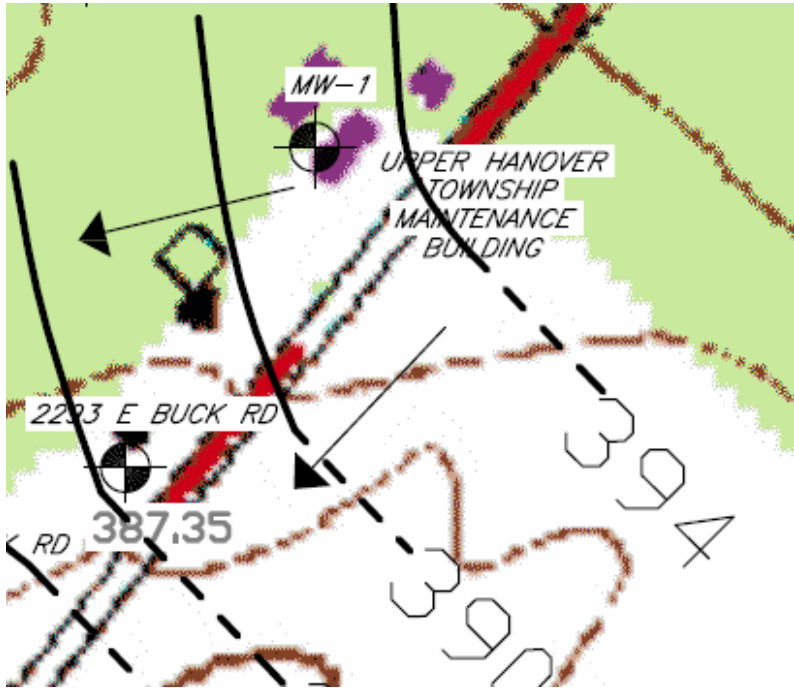
FULL SERVICE CIVIL ENGINEERING & CONSULTING



## UPPER HANOVER AUTHORITY HYDROGEOLOGIC STUDY

Gilmore & Associates, Inc. (G&A) conducted a site characterization and groundwater investigation pertaining to removal of one (1) 500-gallon unleaded gasoline UST and closure-in-place of one (1) 1,000-gallon diesel fuel UST. A release of petroleum had been reported during the removal activities of the former 500-gallon UST. The Site characterization performed by G&A consisted of review of existing files, soil sampling, site survey, installation of one (1) down-gradient monitoring well, conducting two (2) rounds sampling of 13 nearby potable water supply wells, meeting with PADEP, preparation of groundwater elevation contour maps, and reporting. The site characterization was conducted in order to ascertain whether a prior reported release of petroleum may pose a threat to site users, nearby residents, or the environment. G&A concluded that remediation was successful in removing contaminants from soil and that groundwater had not been negatively impacted by the release of petroleum.

The PADEP approved the closure of the two (2) former USTs and issued a release of liability under Act 2 regarding the reported petroleum release. G&A provided results of the sampling to nearby residents.



### Services Provided by G&A

- UST Site Characterization and Remediation through PA Act 2

Client Information  
Bill Kalb, Manager  
1704 Pillsbury Road  
East Greenville, PA 3129  
Phone: (215) 679-9735

Contact Information  
Toby J. Kessler, PG  
65 E. Butler Avenue, Suite 100  
New Britain, PA 18901-5106  
Phone: 215-345-4330

GILMORE-ASSOC.COM



GILMORE & ASSOCIATES, INC.

FULL SERVICE CIVIL ENGINEERING & CONSULTING



## NATIONAL PENN BANK ENVIRONMENTAL SITE ASSESSMENT Warwick Township, PA

Gilmore & Associates, Inc. provided an Environmental Site Assessment of a warehouse facility planned for purchase by one of National Penn Bank's clients. Gilmore & Associates, Inc. has performed numerous Phase I Environmental Site Assessments for National Penn Bank throughout Bucks, Montgomery, Lehigh, Berks, and Chester Counties. Gilmore & Associates, Inc. regularly provides Phase II Environmental site assessments for National Penn Bank customers



### Services Provided by G&A

- Phase I Environmental Site Assessment

Client Information  
Earl Clevestine  
95 North Broad Street  
Doylestown, PA 18901  
Phone: (215) 489-9735

Contact Information  
Toby J. Kessler, PG  
65 E. Butler Avenue, Suite 100  
New Britain, PA 18901-5106  
Phone: 215-345-4330

[GILMORE-ASSOC.COM](http://GILMORE-ASSOC.COM)