



GILMORE & ASSOCIATES, INC.

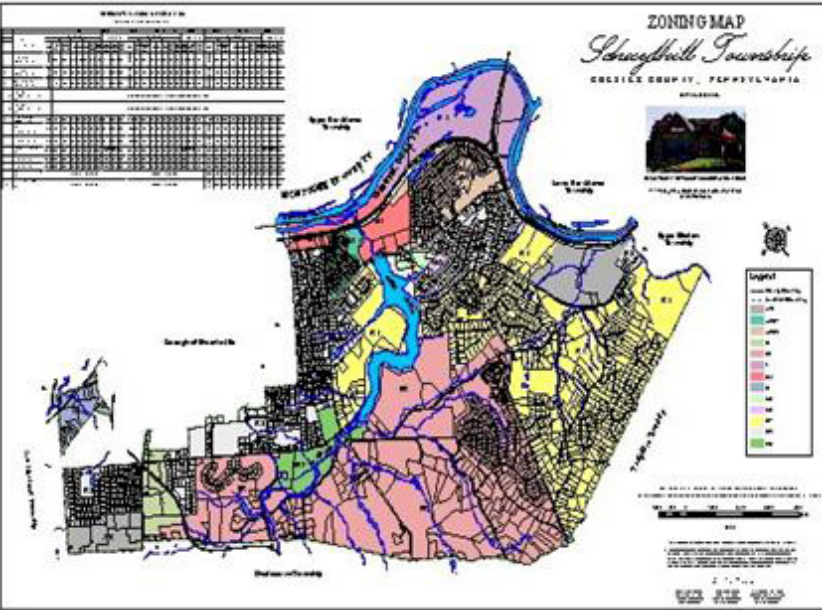
FULL SERVICE CIVIL ENGINEERING & CONSULTING



PHASE 2 GIS PROGRAM Schuylkill Township, PA

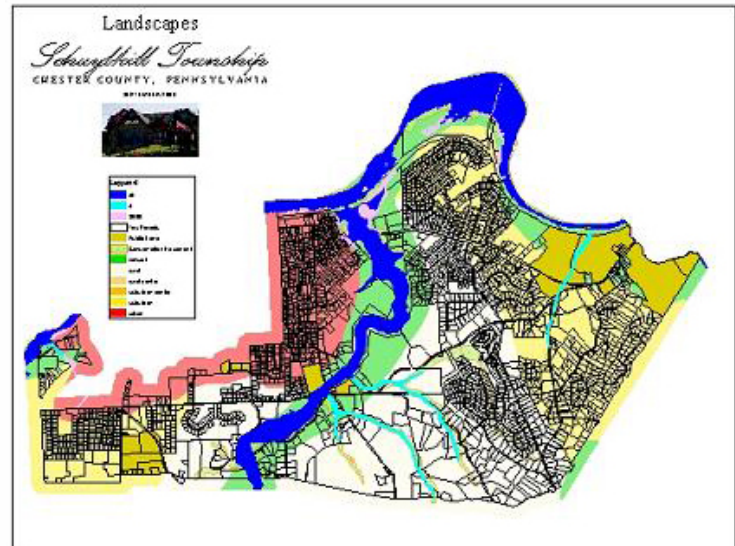
The Phase 2 GIS Program for Schuylkill Township includes updates to subdivision inventory (scan and link to GIS mapping); GPS of sign inventory (includes database for type/condition/material/reflectivity, etc.); GPS of storm sewers for MS4 compliance, sanitary sewer mapping from Authority as-built plans; GPS Fire Hydrant Inventory; road maintenance database; and continued support for property maintenance and permit maintenance modules.

Gilmore & Associates, Inc. also provides Comprehensive Plan update support using existing and new mapping layers.



Services Provided by G&A

- GIS
- GPS
- Property/Permit Management



Client Information
Mary Bird, Township Manager
Schuylkill Township
111 Valley Park Road
Phoenixville, PA 19460
610-933-5843

Contact Information
T. Alex Nguyen, GISP
Manager, GIS Services
anguyen@gilmore-assoc.com
(P): 215-345-4330

GILMORE-ASSOC.COM



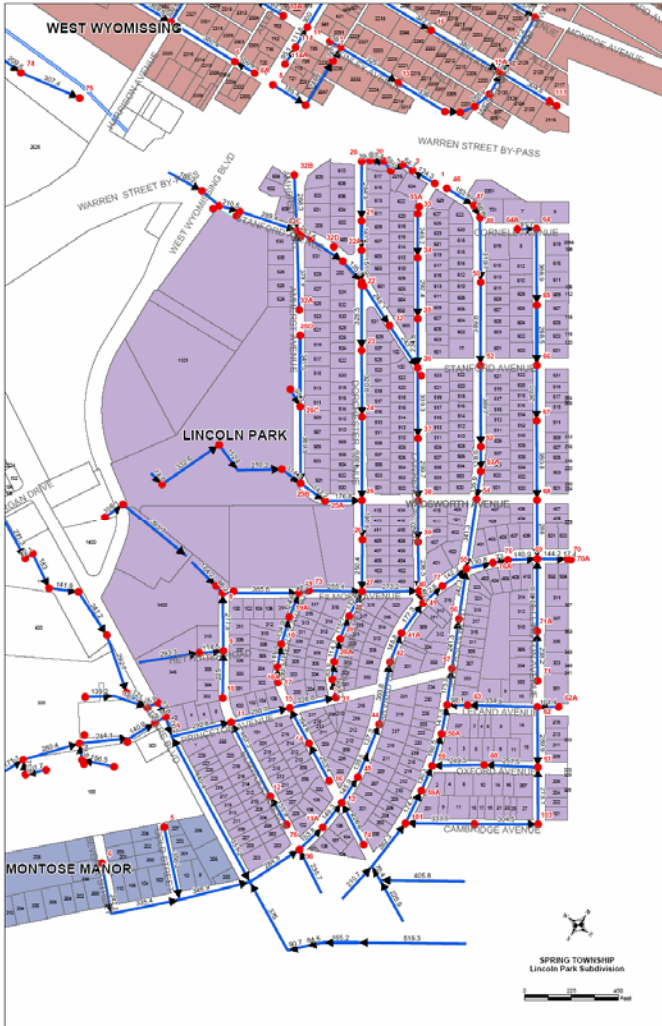
GILMORE & ASSOCIATES, INC.

FULL SERVICE CIVIL ENGINEERING & CONSULTING



PHASE 2 GIS PROGRAM Spring Township, PA

The Phase 2 GIS Program for Spring Township includes updates to the sanitary sewer system using Township interns to collect accurate GPS locations. Mapping services included ACT 537 compliance mapping support and a revised Township-wide manhole numbering system. On-site well information was added into a parcel database to include nitrate/coliform level information. G&A performed all updates to GIS mapping, available through Berks County, including parcel and street centerline updates. G&A added 2004 Color Aerial Photography, and conducted a Hardware/software/network review with recommendations for improvement.



Services Provided by G&A

- GIS
- Property/Permit Management
- GPS

Client Information
Jeri L. Diesinger, Township Engineer
Spring Township
2800 Shillington Road
Cornwall Terrace
Reading, PA 19608
610-678-5393

Contact Information
T. Alex Nguyen, GISP
Manager, GIS Services
anguyen@gilmore-assoc.com
(P): 215-345-4330

GILMORE-ASSOC.COM



GILMORE & ASSOCIATES, INC.

FULL SERVICE CIVIL ENGINEERING & CONSULTING



GIS/PERMIT & PROPERTY MANAGEMENT SYSTEM Upper Merion Township, PA

Gilmore & Associates, Inc. developed a GIS/Property and Permit Management system for Upper Merion Township. This system includes base mapping of the entire township, using township specific aerial photography at 1:50 scale. Data includes ADA ramps, fire hydrants, updated FEMA floodplains, zoning, landuse, integration of county tax assessment, permits, code violations, park locations, fire station locations, fire response districts, 3-D terrain mapping, subdivision digital submission requirements, and sewer integration.

Services Provided by G&A

- GIS/Property & Permit Management
- 3-D Site review
- Code Response Mapping
- Land Planning Mapping
- Parks & Recreation Mapping



Client Information
Rob Loeper, Planning Director
Upper Merion Township
175 West Valley Forge Road
King of Prussia, PA 19406
610-265-2606

Contact Information
T. Alex Nguyen, GISP
Manager, GIS Services
anguyen@gilmore-assoc.com
(P): 215-345-4330

GILMORE-ASSOC.COM



GILMORE & ASSOCIATES, INC.

FULL SERVICE CIVIL ENGINEERING & CONSULTING



GIS SERVICES

Perkasie Borough, PA

Gilmore & Associates, Inc.'s (G&A) involvement in this project consisted of the comprehensive GIS mapping of all sanitary sewer and water utility system assets.

G&A used Global Positioning System (GPS) data to measure accuracy of the entire mapping system, including every water valve in the service area.

The customer database was integrated with parcel base mapping for billing and service analysis. In addition, an extensive numbering system design was implemented for an attribute database for valves, wells, hydrants, manholes, sewer lines, etc.

Services Provided by G&A

- GIS Mapping
- GPS data collection

Client Information

Gary Winton
306 N. 5th Street
Perkasie, PA 18944-0159
(P): 215-257-3654

Contact Information

T. Alex Nguyen, GISP
Manager, GIS Services
anguyen@gilmore-assoc.com
(P): 215-345-4330

GILMORE-ASSOC.COM