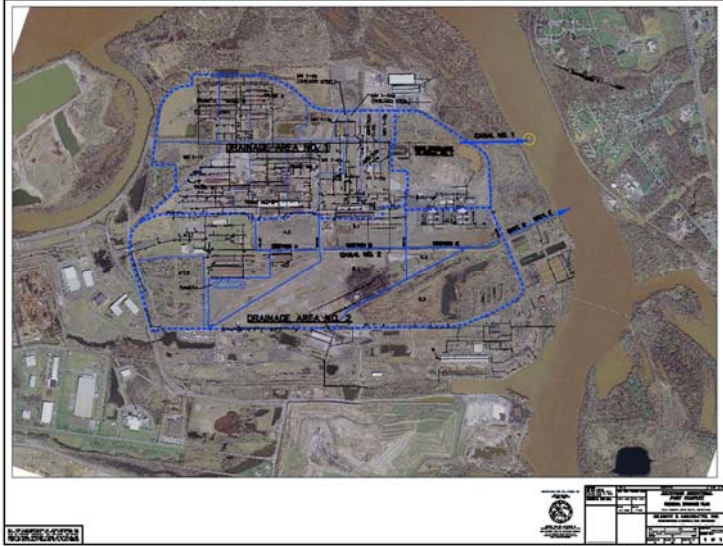




GILMORE & ASSOCIATES, INC.

FULL SERVICE CIVIL ENGINEERING & CONSULTING



KEYSTONE INDUSTRIAL PORT COMPLEX STORMWATER PLANNING SERVICES Falls Township, Bucks County

Gilmore & Associates, Inc.'s performed stormwater planning services for the development of the Keystone Industrial Port Complex in southern Bucks County. The KIPC is the former US Steel Fairless Works facility. Relying on the vast infrastructure of roads, rail, port, and utilities that remain from the days of steel production, US Steel is attracting international manufacturing firms to locate their operations at the KIPC. Gilmore & Associates provided Stormwater Planning services to analyze the existing stormwater system and understand its ability to serve the needs of redevelopment and the future build out of the site. The regional stormwater plan was prepared with the consideration of municipal stormwater ordinances, PA DEP Permit criteria and the NPDES program. .

Services Provided by G&A:

- Stormwater Planning

Client Info
 Dennis Jones, Regional Manager
 US Steel
 1 Ben Fairless Drive
 Fairless Hills, PA 19030
 Phone: 215-736-5020

Contact Info
 Thomas M. Hanna, PE, LEED AP
 VP Land Design
thanna@gilmore-assoc.com
 215-345-4330 ext 306

GILMORE-ASSOC.COM