



GILMORE & ASSOCIATES, INC.

FULL SERVICE CIVIL ENGINEERING & CONSULTING

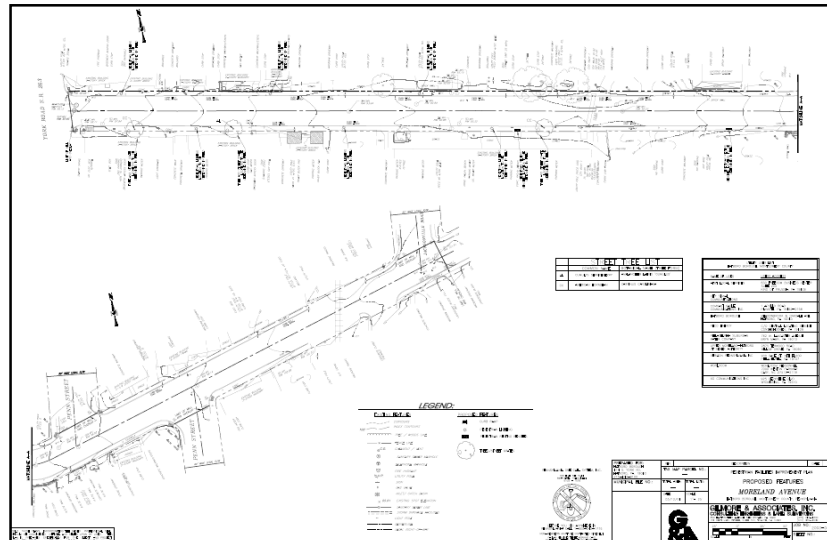


MORELAND AVE. PEDESTRIAN FACILITIES Hatboro Borough, PA

Gilmore & Associates, Inc. completed the design and administration for the pedestrian facility improvements along Moreland Avenue. This project was an extension of streetscape improvements previously completed along York Road within the Borough. The project included the installation of curb, sidewalk, paving, handicap ramps, trees/street grates, benches, and streetlights. A traffic signal loop sensor was also included in the new design.

Services Provided by G&A

- Grant Application & Administration
- Project Design
- Project Bidding
- Project Management
- Construction Observation & Administration



Client Information
 Joseph Pantano, Borough Manager
 Hatboro Borough
 414 S. York Road
 Hatboro, PA 19040
 (215) 443-9100

Contact Information
 Robert G. Solarz, P.E.
 President
 rsolarz@gilmore-assoc.com
 215-345-4330

GILMORE-ASSOC.COM